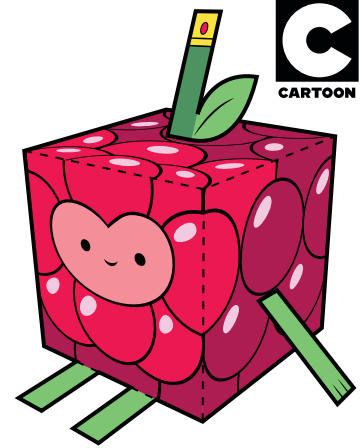


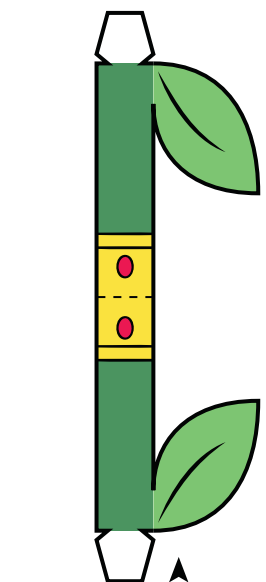
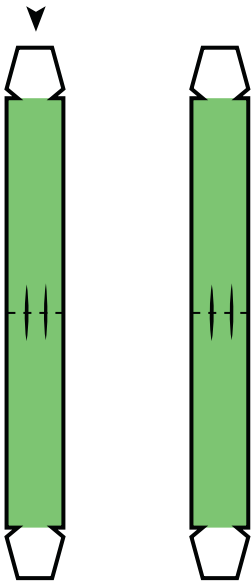


Print template on sturdy paper.
Cut carefully along solid black outline.
Score and fold on dotted lines.
Tape or glue folded tabs to the insides.
Note: Ask your parents to help
when using scissors or cutters.

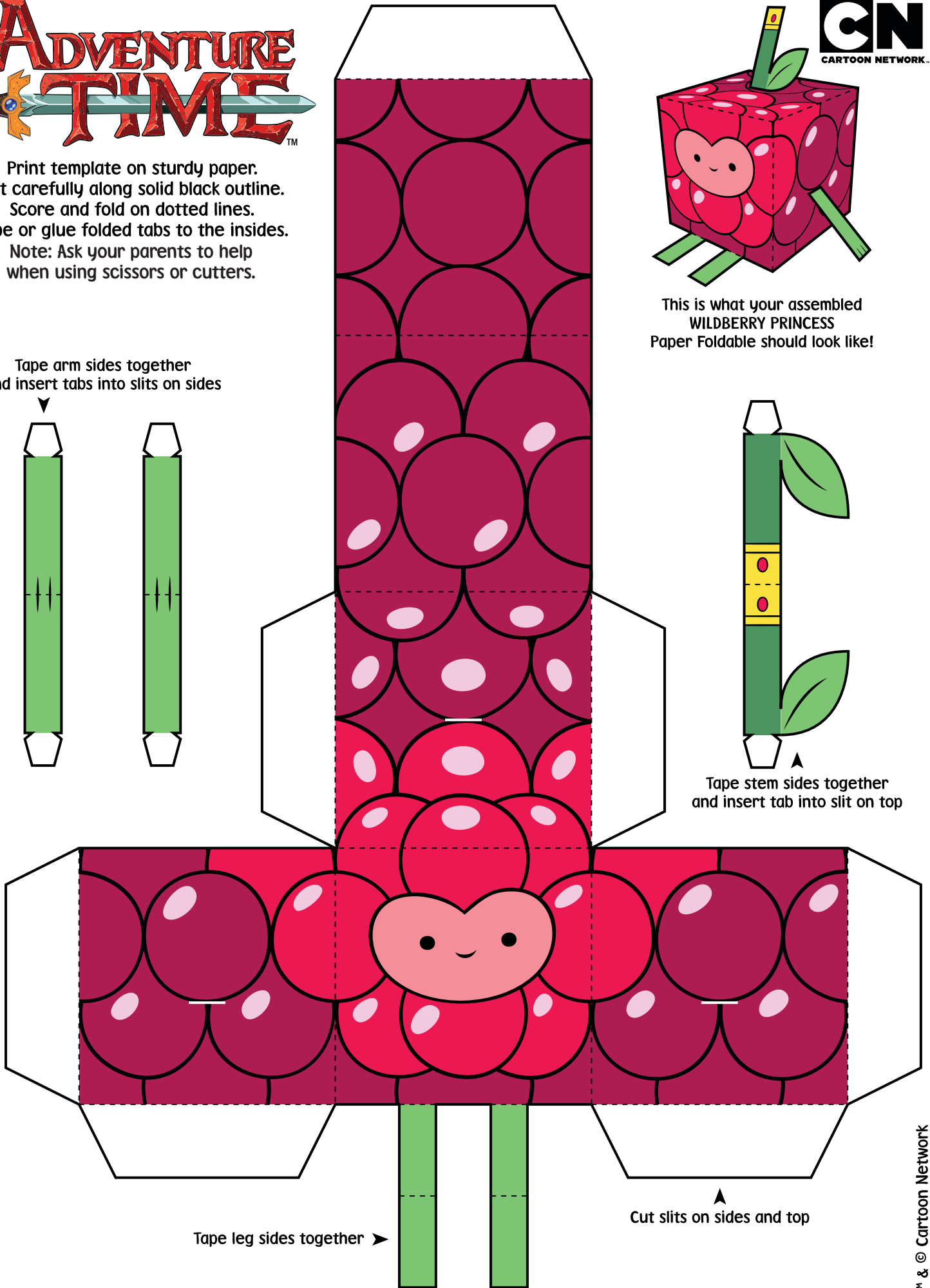


This is what your assembled
WILDBERRY PRINCESS
Paper Foldable should look like!

Tape arm sides together
and insert tabs into slits on sides



Tape stem sides together
and insert tab into slit on top



Tape leg sides together ▶

▲ Cut slits on sides and top